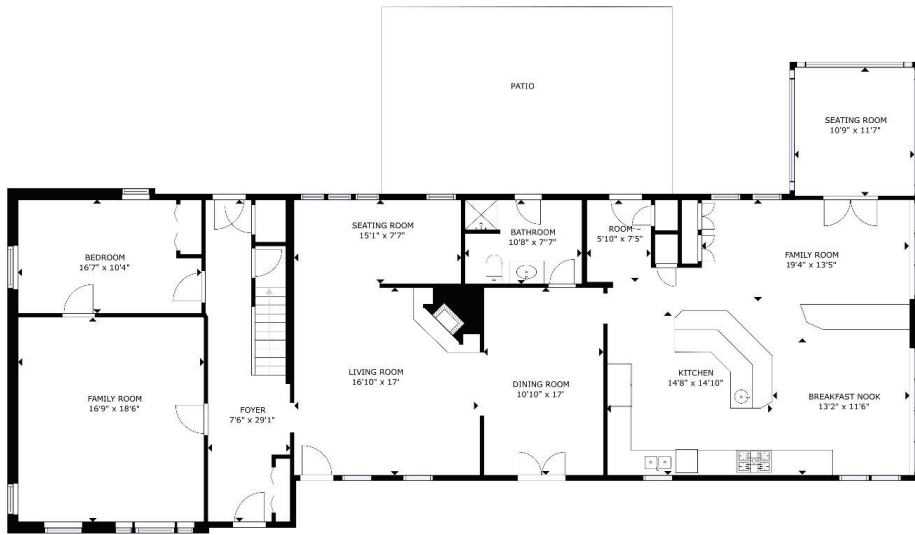
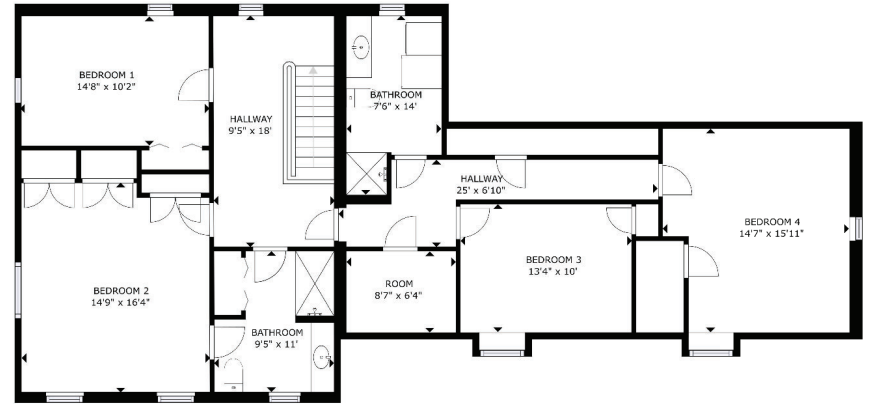


2549 STATE HIGHWAY 28, ONEONTA, NY

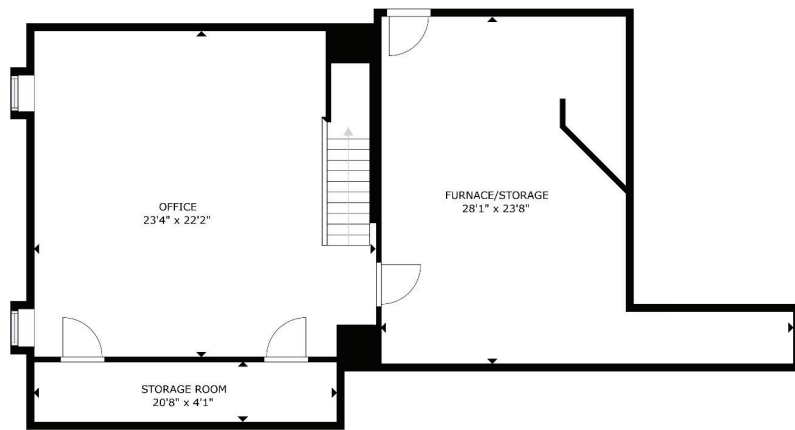
BUILT 1826 BR 4 BA 3 SQ FT 3,742 LOT SZ 13.38 ac



MAIN FLOOR: 2,277 SQFT



LOFT FLOOR: 1,465 SQFT



BASEMENT: 1,053 SQFT

GROSS INTERNAL AREA
FLOOR 1: 1053 sq ft, FLOOR 2: 2277 sq ft
FLOOR 3: 1465 sq ft, EXCLUDED AREA: PATIO: 433 sq ft
TOTAL: 4795 sq ft
SIZES AND DIMENSIONS ARE APPROXIMATE, ACTUAL MAY VARY.